

# How Coatings established a strong bond with LCA and Sustainability: CEPE database and Ecofootprint tool



---

6<sup>TH</sup> SEPTEMBER 2017, LCM 2017 – LUXEMBOURG

Olympia Dolla, CEPE ([o.dolla@cepe.org](mailto:o.dolla@cepe.org))

Pau Huguet, Ecomatters ([pau.huguet@ecomatters.es](mailto:pau.huguet@ecomatters.es))

# What is CEPE?

CEPE offices are based in Brussels, close to the EU institutions

**We represent:**

Companies	Value
App. 800 paint producers	13 billion EUR/y
75 printing ink	3 billion EUR/y
20 artists' colours	0.3 billion EUR/y
110,000 people directly employed	85% of market value

CEPE sectors: Aerospace Coatings, Artists' colors, Can coatings, Coil Coatings, Decorative Coatings, Industrial Wood coatings, Marine coatings, Powder coatings, Protective Coatings, Vehicle Refinishes Coatings

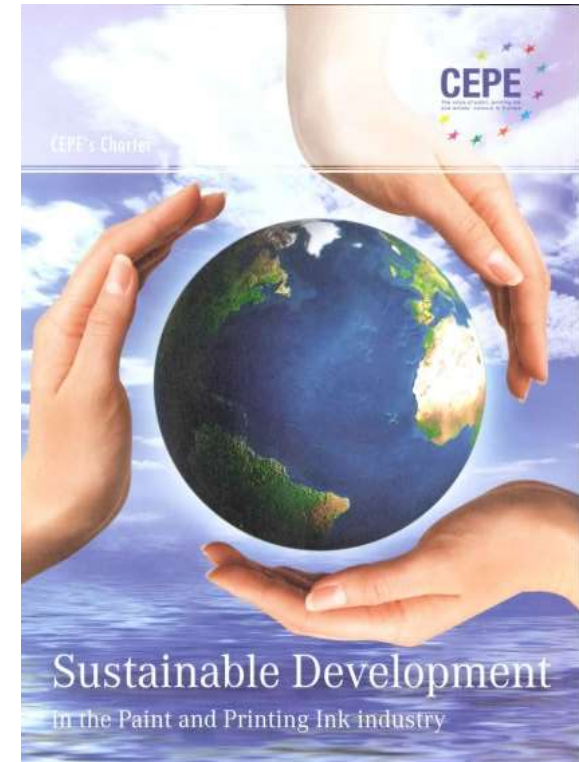
# CEPE and Sustainability



ecomatters

- Commitment of the industry towards sustainability by forming a Task Force working on this since 2010
- CEPE Sustainability Charter was created

**Quote from CEPE's Sustainability charter:**  
CEPE members will be encouraged in future to also identify and analyse the broader environmental effects of their products (carbon footprint, water usage etc.) over the product's Life Cycle (from cradle to grave).



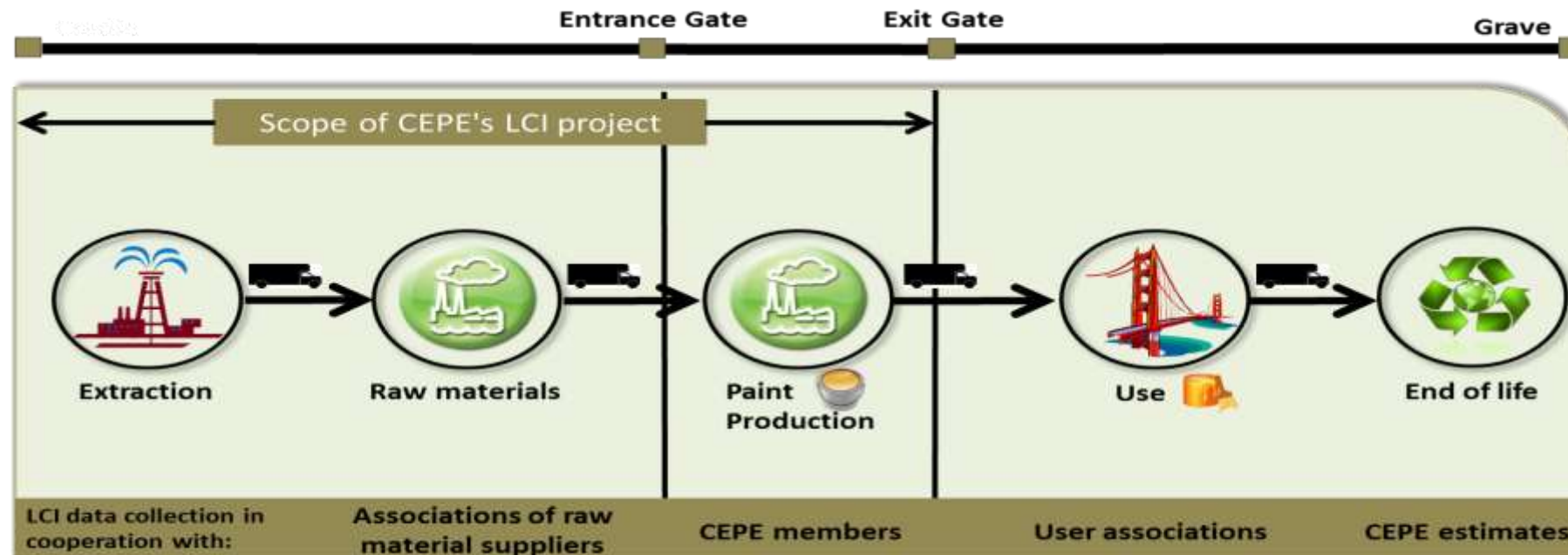
# Main activities so far

---

- CEPE LCI project
- Ecofootprint Tool
- PEF pilot project on Decorative paints
- Other sectorial Screening studies on Life Cycle of the Coating

# CEPE LCI Database

- CEPE LCI project from Sept. 2011 and ∞
  - Cradle to gate - LCIs for the main production processes and raw materials
  - Cover all CEPE sectors
  - Pre-competitive project – create level playing field on data



# CEPE LCI Database

---

- 3 different types of manufacturing models have been added
- Yearly updates by including more raw materials – 323 RMs so far
- Every 3 years re-evaluate the data gathered and replace it with updated if possible
- Users: Companies with LCA software access

# Ecofootprint Tool

---

- User-friendly tool that enables the users to estimate their cradle to gate or cradle to grave impact of their paint product
- The Ecofootprint tool is used by the CEPE members by using as the datasets from the CEPE LCI database
- Users: SMEs or Companies without LCA expertise
- Created in collaboration with Ecomatters

# Ecofootprint Tool in Numbers



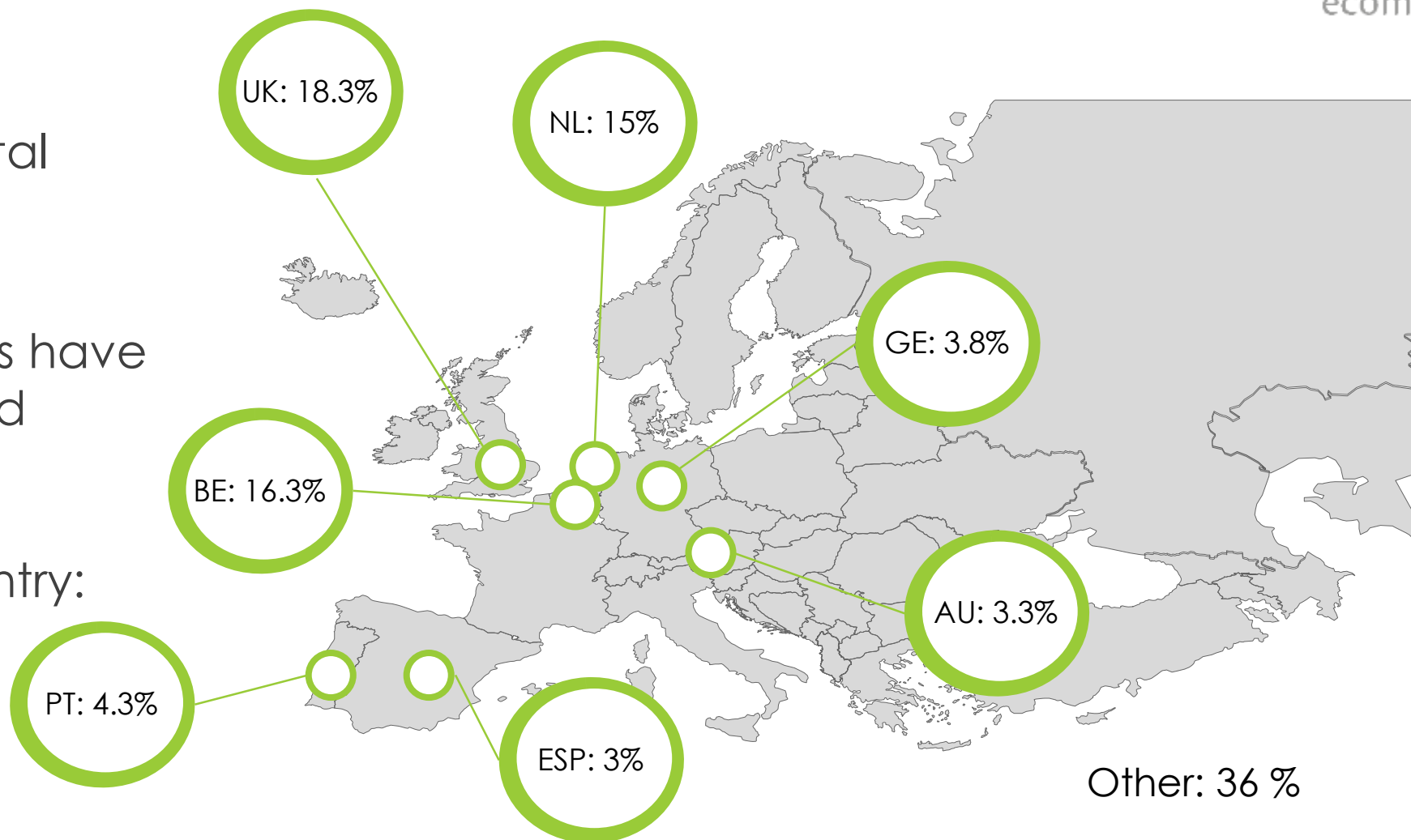
718 users in total



1,417 products have been analyzed



Users per country:





# Sectorial Projects

---

- Protective coatings have made a screening study for steel bridges
- Powder coatings for window frames
- Coil Coatings for 7 different types of Coil systems
- EuPIA (Printing Inks) on Virtual (Generic) Ink
- Decorative coatings run a 4 year pilot project on Product Environmental Footprint (PEF)

# Sectorial Projects

---

- **Protective coatings have made a screening study for steel bridges**
- **Powder coatings for window frames**
- Coil Coatings for 7 different types of Coil systems
- EuPIA (Printing Inks) on Virtual (Generic) Ink
- Decorative coatings run a 4 year pilot project on Product Environmental Footprint (PEF)

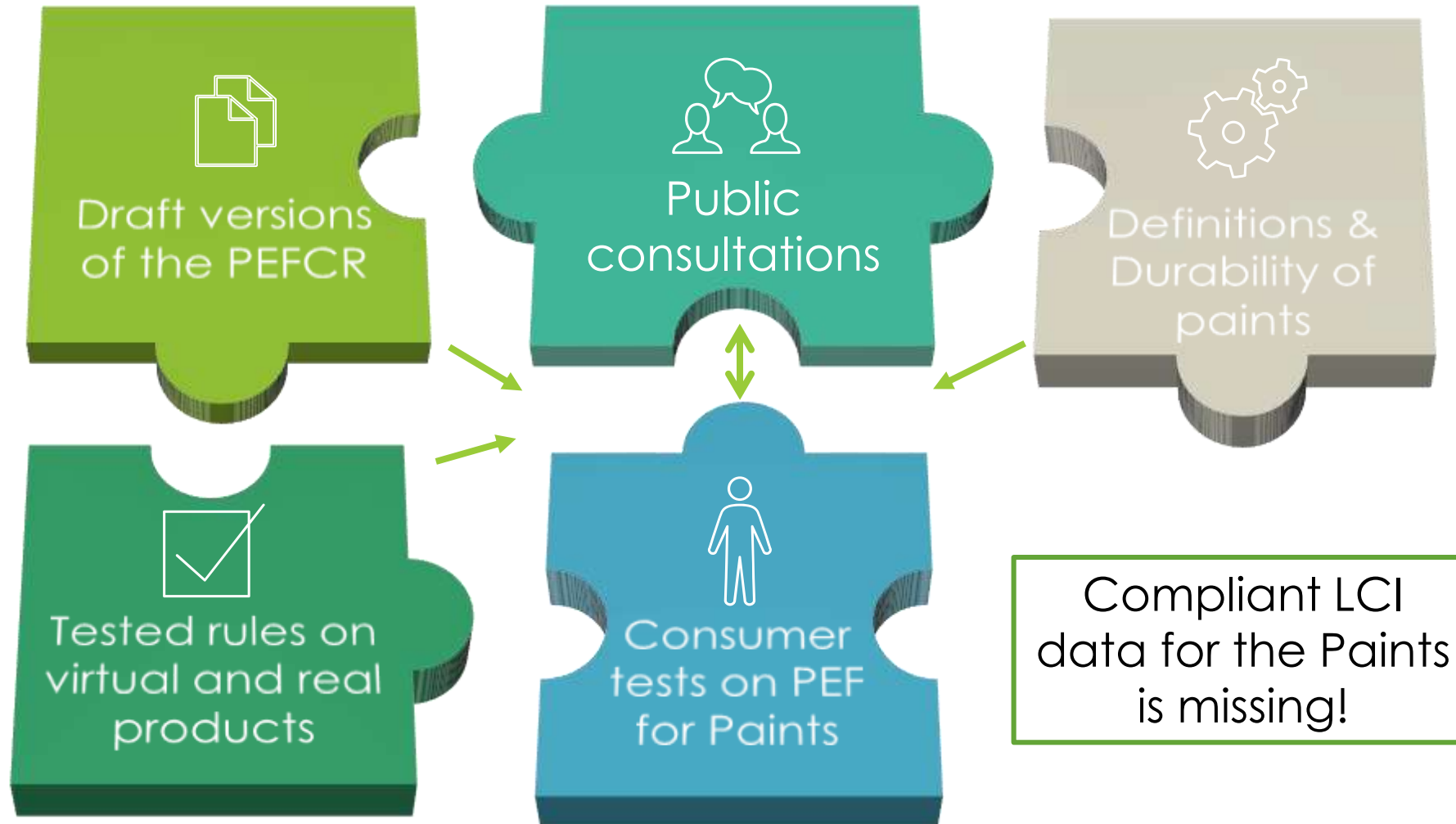
**Included in the Ecofootprint tool – enables the user to run Full LCA!**

# PEF Pilot – High Level Planning

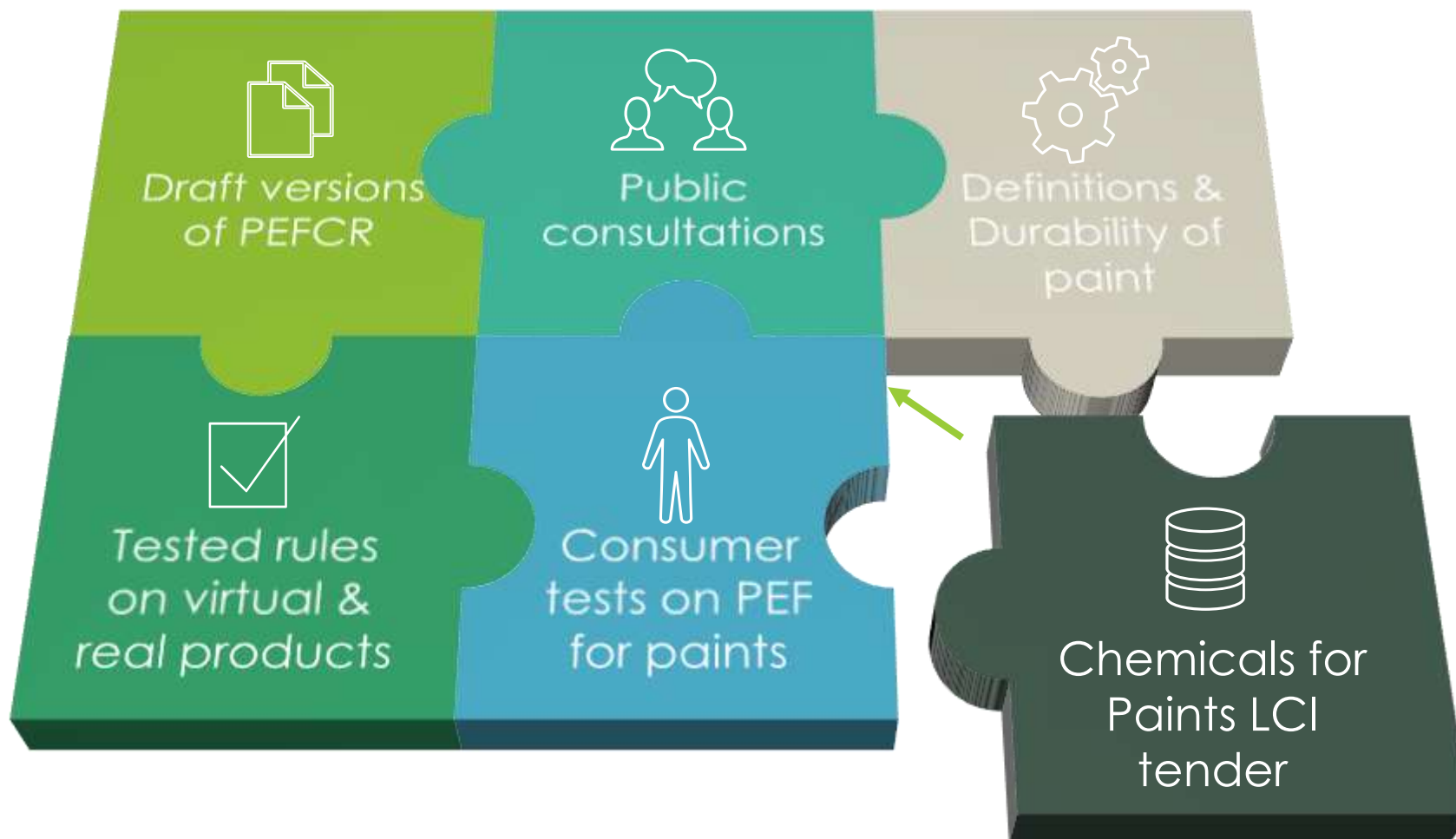
---

- Started in **November 2013**
- **2014 – 2017** PEF pilot decorative paints
  - Write PEF calculation rules (PEFCR)
  - Test the rules by running PEF studies (screening and supporting studies)
  - Communication of PEF study results to users
  - Benchmarks and finalize calculation rules
- **2017 – 2020:** Evaluation of results by European Commission
- **2020 onwards:** (if positively evaluated by the Commission)  
Possible use of PEF method in legislation and voluntary schemes

# PEF so far...



# One piece missing...



# Complete the PEF puzzle!



# Chemicals for Paints Tender

---

- CEPE is the tenderer
- Consortium of experts:
  - Ecoinvent
  - Ecomatters
  - GreenDelta
- Set of 88 datasets important for Paint calculations
- 50-50 budget contribution between CEPE/EC

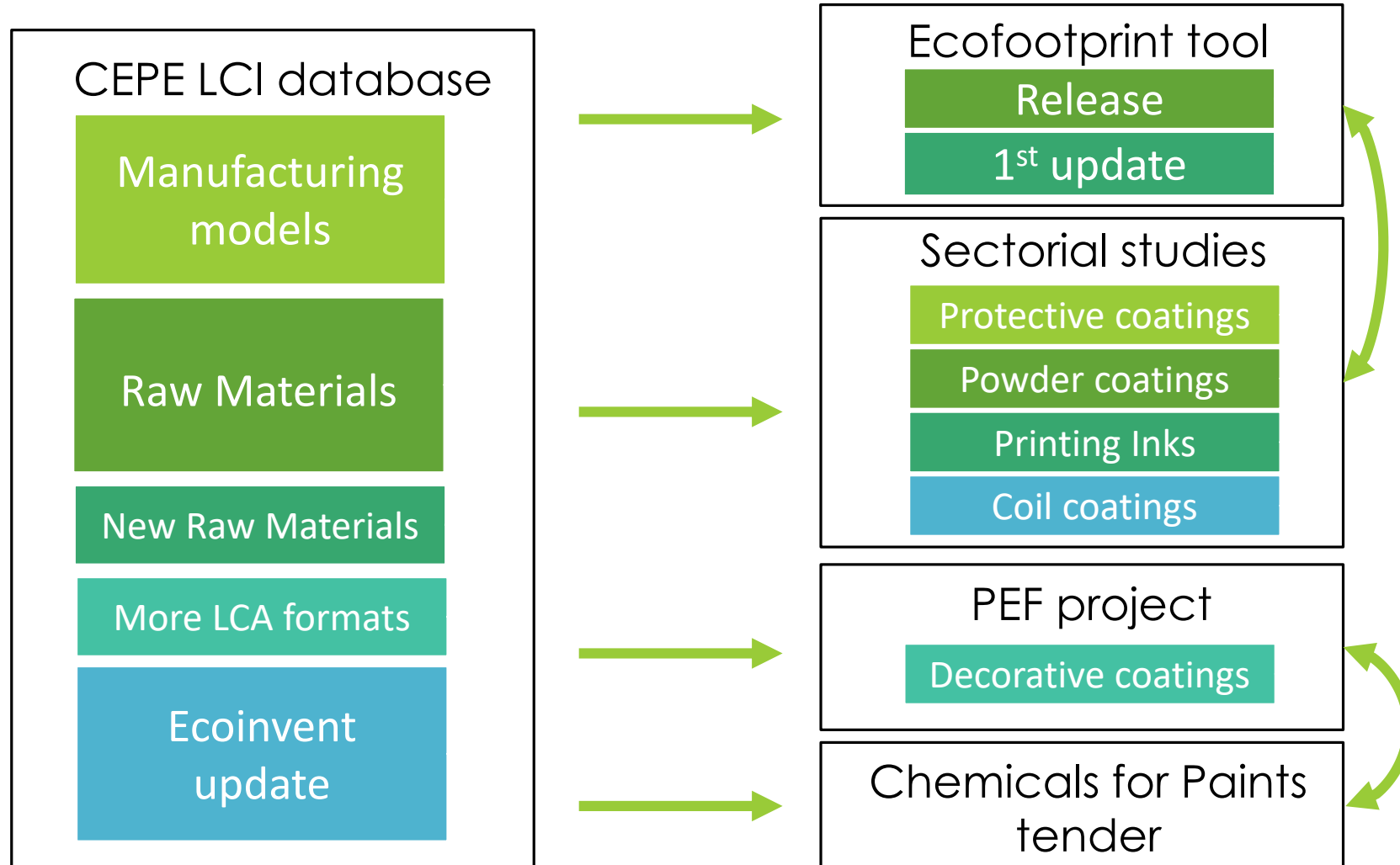
# What's new with these datasets?

---

- CEPE LCI is the basis
- Ecoinvent upgrade from 3.1 to 3.3
- Compliant with PEF technical requirements (i.e. system boundaries, allocation, cut-off, etc.)
- Detailed ILCD compliant documentation and nomenclature (i.e. ILCD elementary flows)
- Every dataset has been reviewed twice by LCA experts



# CEPE data historically



# How can paint become greener?

---

- Better quality of data. Continuously improved datasets – reviewed based on relevance
- Contribution between industry and LCA data providers
- Important: LCA software compatibility is key
- PEF project aims to succeed in that!

Thank you for your  
attention!

---